

LYDDEN 12.5 NOW AVAILABLE

4 BEDROOM - ALFRESCO / LIVING PROMO

Includes Vue Façade



\$290,000*
House price only

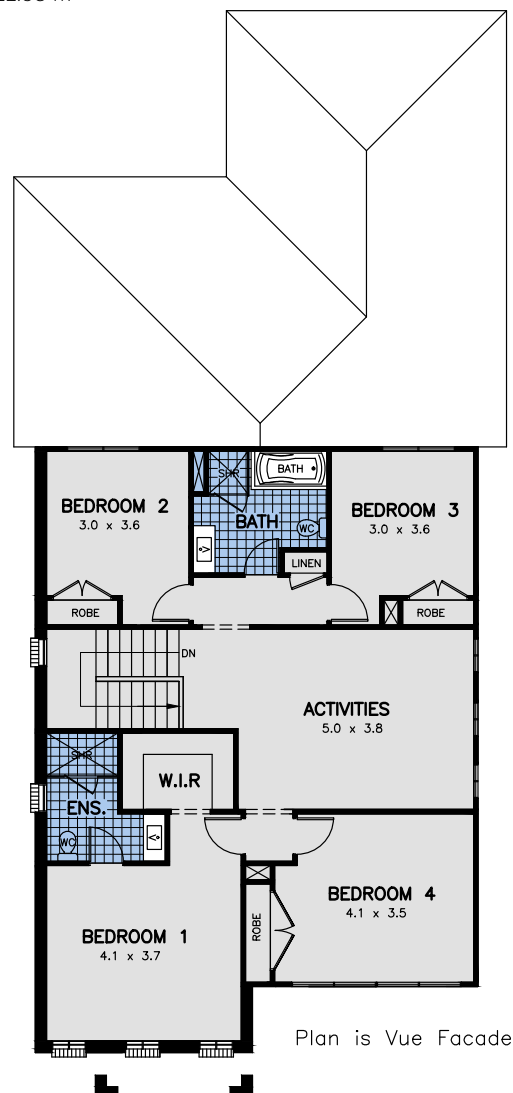
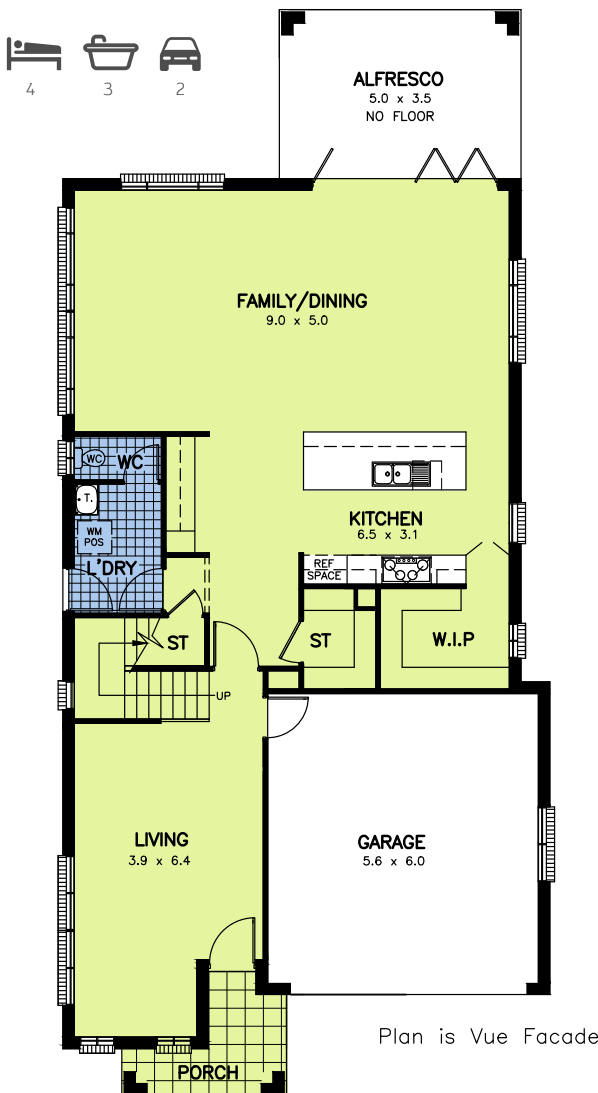
**SAVE
\$10,000[^]**

- Includes Vue Façade
- 2590mm high ceilings to ground floor
- upgraded glazing to selected windows

32.53 Squares

Area: 302.25 m²
Width: 10.08 m
Depth: 22.50 m

MAXIM



Ask your sales consultant about façade options available

*Basic Sydney price effective 13th November, 2017 Maxim Inclusions, excludes site costs, BASIX and statutory authority requirements costs. Excludes furnishings, decorator items, window furnishings, light fittings, floor covering, electrical appliances, land and landscaping. Includes Vue façade, Render feature, 2590mm high ceilings to ground floor and upgraded glazing to selected windows. [^]Compared to the Basic price of the Lydden model displayed at the Ponds. Solar boosted electric Hot water in the Southern Highlands is subject to manufactures recommendations (where gas service not available) or RHEEM Gas 31/170 High Efficiency hot water service is available to gas serviced areas, conditions apply. For more information contact your Allworth Sales Consultant.

Allworth
MASTER BUILT HOMES