

# OUTSTANDING VALUE

FROM THE PRICELEADER RANGE OF HOMES

## HORIZON HARMONY



**\$151,900\***

House only price

135.69 m<sup>2</sup>  
14.60 squares

## LUMINA BIZANTE



**\$166,900\***

House only price

179.49 m<sup>2</sup>  
19.32 squares

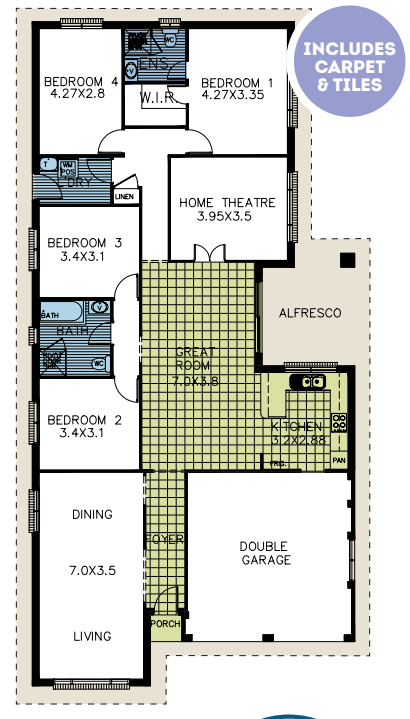
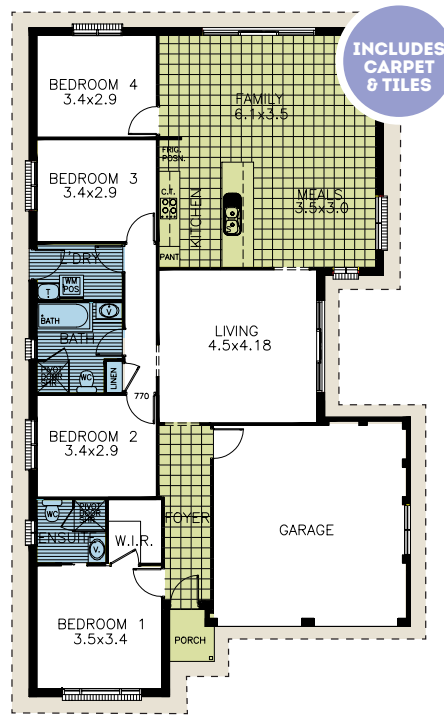
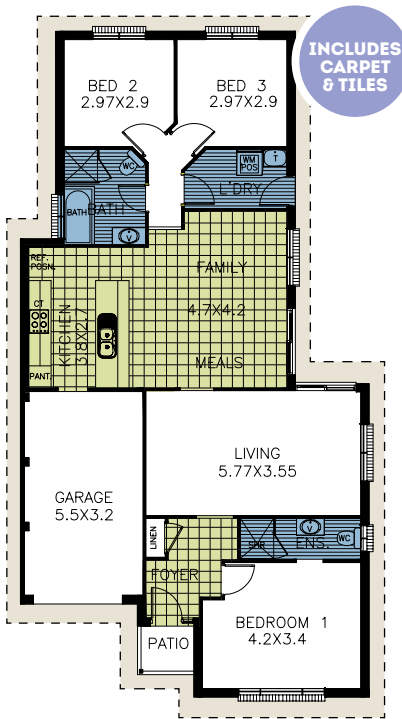
## CONCERTO FLAIR



**\$180,200\***

House only price

216.21 m<sup>2</sup>  
23.27 squares



## GET THE ALLWORTH ADVANTAGE#

Offer available for a limited time only. Get in quick and receive the Allworth Advantage for your brand new home



- Choice of quality concrete roof tiles\* from Monier, Boral & Bristle OR Colorbond™ Steel roofing
- Sarking to underside of your roofing choice
- Treated pine timber frame & roof trusses
- Automatic garage door opener
- Hills premium alarm system (Model: DAS RELIANCE 8)
- Gainsborough double cylinder 'Trilock' front entry door furniture

- Flyscreens (fibre mesh) to all external windows (excludes hung doors and sliding glass doors)
- Vito Berton 'Qaad' kitchen sink mixer tap
- OMEGA stainless steel dishwasher model ODW702XB
- OMEGA stainless steel microwave model OM30X#
- Everpure Platinum inline water filter
- Love your walls promotion - 3 coat Solver Ultra Acrylic Paint System

\*Sydney basic price effective 3rd April, 2018. Price does not include land. Basic price excludes site costs, BASIX and Statutory Authority requirements costs. Excludes furnishings, decorator items, window furnishings, light fittings, timber flooring (and not available), electrical appliances, landscaping. Alfresco area includes roofline only. \*Select range of concrete roof tiles, details available at sales centre. Carpet and tiles from select builders range. # Allworth Advantage offer is only available to clients paying full deposit within the nine (9) day period nominated on our quotation and cannot be taken in conjunction with any other offer or promotion. We reserve the right to withdraw this offer at any time without notice - T&C apply, see brochure for details. Allworth Constructions Pty Limited ABN78002565353 BL34459

For floor plans and display locations visit [allworthhomes.com.au](http://allworthhomes.com.au)

