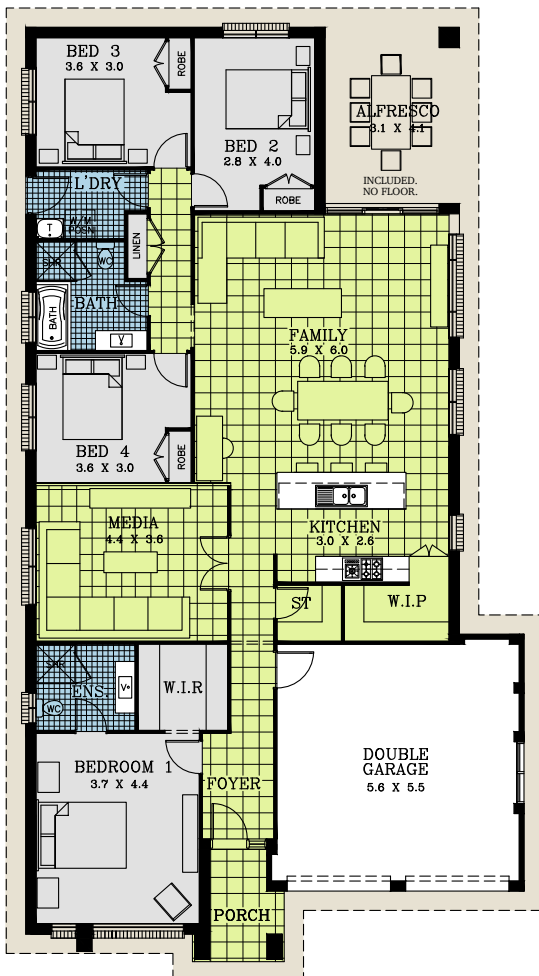


Imagine

NOW WITH
AIR-CON

THIS HOME ON YOUR LAND

HARMONY ENTERTAINER - 4 Bedroom Media
Model displayed at Hamlyn Terrace



From **\$251,500***

Ready To Live package price, house only

PACKAGE INCLUSIONS*

- ✓ Alto Facade and render feature
- ✓ Standard Basix
- ✓ Standard site costs
- ✓ Standard statutory requirement costs
- ✓ H1 class slab
- ✓ Eaves
- ✓ Builders selected range of carpet and tiles
- ✓ Fully ducted reverse cycle air-conditioning
- ✓ 20mm Caesarstone benchtops to kitchen
- ✓ 900mm OMEGA cooktop, oven & rangehood
- ✓ Bulk head over kitchen cupboards
- ✓ Priceleader Inclusions
- ✓ Termite resistant treated frame
- ✓ 180 day tender

23.48 Squares

Area: 218.20 m²
Width: 11.57 m
Depth: 21.70 m

Conditions apply. Ask sales consultant for more details

*Includes Regional basic house price effective 1st July, 2018. 'Ready To Live' pricing includes: Standard site costs, BASIX costs and Statutory Authority requirements costs, carpet and tile (from builders range) and ducted reverse cycle air conditioning. Does not include land and is subject to site inspection, conditions on the 149 certificate and 88B instrument, registered surveyors levels and land developers guidelines or requirements. All services must be within the boundaries and within six (6) metres of the residence. Standard site costs do not include any allowance for rock removal, dropped or deepened concrete edge beams, stepped garages over two (2) brick courses, abnormal subsurface or soil conditions or additional requirements due to service or maintenance easements. Based on lot size no greater than 600 square metres and with site fall no greater than 600mm, front setback 5.50m to garage. Additional cartage/travelling allowance may apply subject to property location. Illustrations are indicative only. Specifically not included are landscaping, timber decks, barbecues or fire places, driveway, furnishings and decorator items, window coverings and light fittings. We reserve the right to withdraw this offer at any time without notice - ask an Allworth New Home Consultant for details. Allworth Constructions Pty Limited BL 34459 ABN 7800256535

Ready To Live

Turn over for
more information





ALL you need to know about Ready To Live

All illustrations are indicative only and may not be included.

What is Ready To Live pricing?

Our Ready To Live pricing incorporates all the major requirements and components to build an Allworth home on your land. We have packaged up all the great stuff about this home, and the council and other costs to create a house package price.

Prices shown in the price list are a 'basic price' for the home only. 'Ready To Live' pricing adds items to see the home complete. Site costs, BASIX (relating to energy efficiency), Council requirements costs, and more, are added to give an all up price estimate.

We are doing things differently.

Why does Ready To Live exist?

More and more visitors to our display centres want to know how much a particular home would cost to build on their block of land - a ballpark figure on the home complete. They want to know if the house that they can see and touch will fit within their budget. Many builders' hedge around estimates on price and inclusions, leading people to be confused, maybe even turning people off the idea of building a new home.

We have identified this frustration and provide package pricing on all our display models.

What problem is this solving for you?

New home buyers are demanding more value for money and more transparency on price for the homes they build – it's a BIG deal, we understand. Our Ready To Live pricing eliminates the blurred lines, unwanted surprises and confusion when building a home.

What doesn't it include?

Landscaping, driveway, window furnishings and furniture. Also check the fine print for other exclusions.

How can we do this?

We have been pricing homes on various sites for so long we feel confident in promoting an all up price that will be very close to the final quotation. There are some conditions relating to lot size, services and site fall but in the majority of cases (on a flat, greenfield site block of land), our all up price should be spot on.

Please ask our New Home Consultants for more information and how our Ready To Live pricing can work for you.