

Senza 12.5 Four 22 on display  
at HomeWorld Leppington



[allworthhomes.com.au](http://allworthhomes.com.au)



WHAT IS THESE OPTIONS?

## **ASPIRE** *Options*

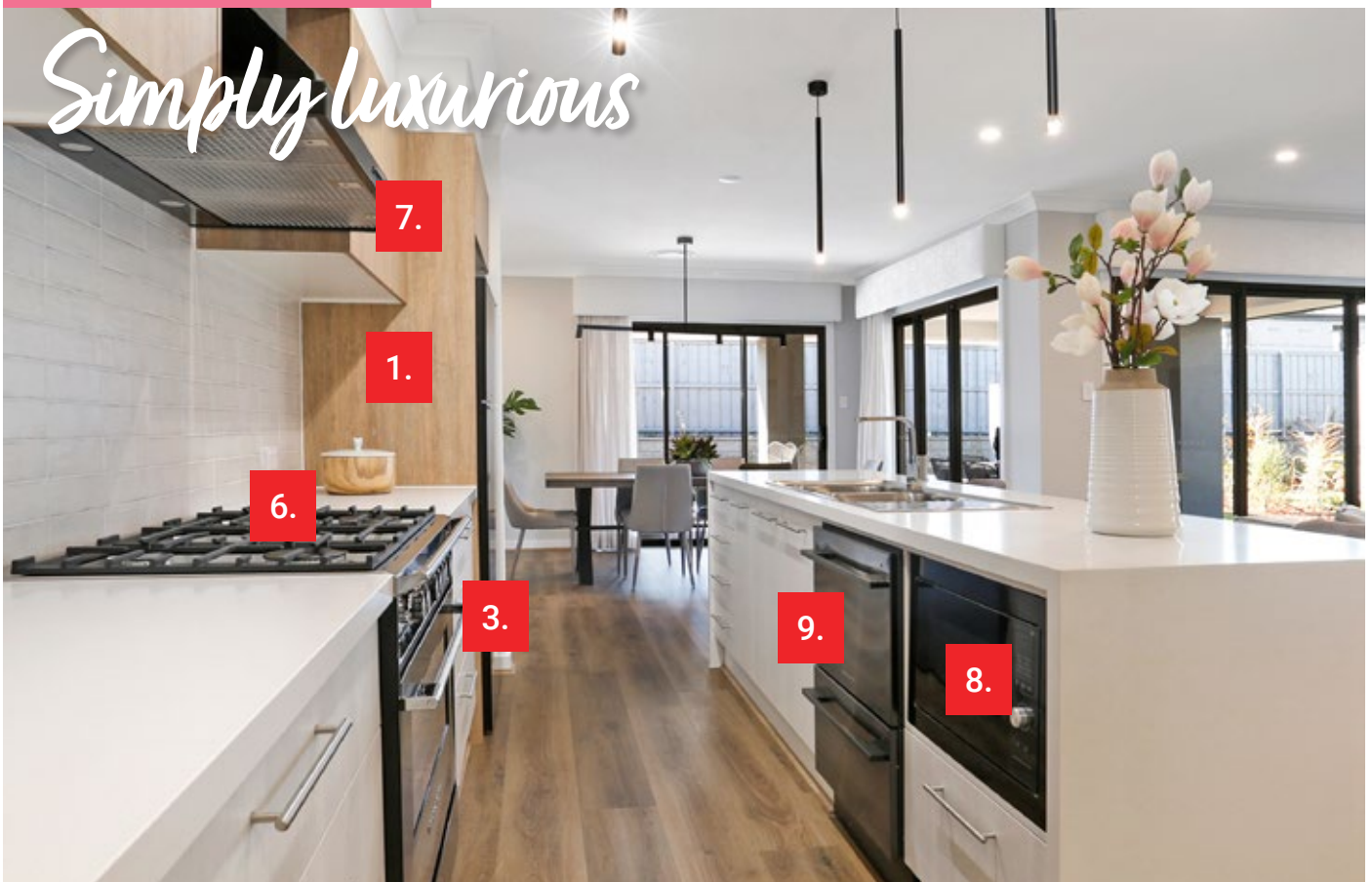
At Allworth Homes, we want to make sure that you have all the modern and most sort after upgrades that most families are looking for when building their new home.

With that in mind we have put together the Aspire options. An optional list of upgrade that is available for all designs, and will take your new home to the next level. Giving you more choices and value for money when building your new home.

Talk to our friendly New Home Consultants to find out how you can get the Aspire options for your new Allworth home.



### KITCHEN OPTIONS



1. **POLYTEC 'EVOLUTION' DOORS** (choose from 'Ravine' or 'Legato' ranges). Both ranges showcase a variety of colours for you to choose from. 2. **POLYTEC 'THERMOLAMINATED' SHAKER STYLE DOORS TO KITCHEN.** 3. **POT DRAWERS TO CABINETRY** (includes x 2 banks per selection). 4. **SOFT CLOSE DOORS AND DRAWERS TO CABINETRY** Ensures doors and drawers close gently. 5. **WATER POINT TO FRIDGE SPACE** Install a water line for your refridgerator water dispenser.

*Absolutely irresistible*



6. FISHER & PAYKEL 900mm 5-BURNER FREESTANDING COOKER (Stainless Steel or Black finish). 7. FISHER & PAYKEL DUCTED RANGE HOOD (Stainless Steel or Black finish). 8. FISHER & PAYKEL MICROWAVE OVEN (Stainless Steel or Black finish). 9. FISHER & PAYKEL DISHWASHER (Stainless Steel or Black finish).



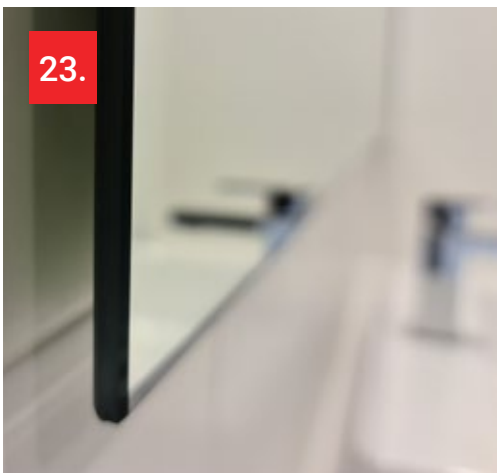
# Stunning amenities



10. WALL MOUNTED 'FLOATING' VANITIES. 11. SOFT CLOSE DOORS AND DRAWERS TO VANITIES Ensures doors and drawers close gently. 12. POLYTEC 'EVOLUTION' DOORS (choose from 'Ravine' or 'Legato' ranges). 13. POLYTEC 'THERMOLAMINATED' SHAKER STYLE DOORS TO VANITIES. 14. TILED RECESS (400mm x 40mm / 600mm x 400mm) OR TILED LEDGE TO SHOWERS (select ONE option). 15. TILED RECESS (800mm x 400mm) TO BATH 16. RECESSED CONCRETE SLAB TO WET AREA FLOORS (ground floor only). 17. ALDER 'LYNX' ECO DUAL SHOWER RAIL WITH 300mm RAIN HEAD TO SHOWERS (Chrome or Black finish). 18. ALDER MIXER TAPWARE TO BASINS, BATH AND SHOWERS - 'QAAD' OR 'TAYA' ('Qaad' in Chrome finish only. 'Taya' in Chrome or Black finish). 19. CAROMA® 'LUNA' SQUARE CLEANFLUSH WALL FACED TOILETS WITH SOFT CLOSE LIDS.



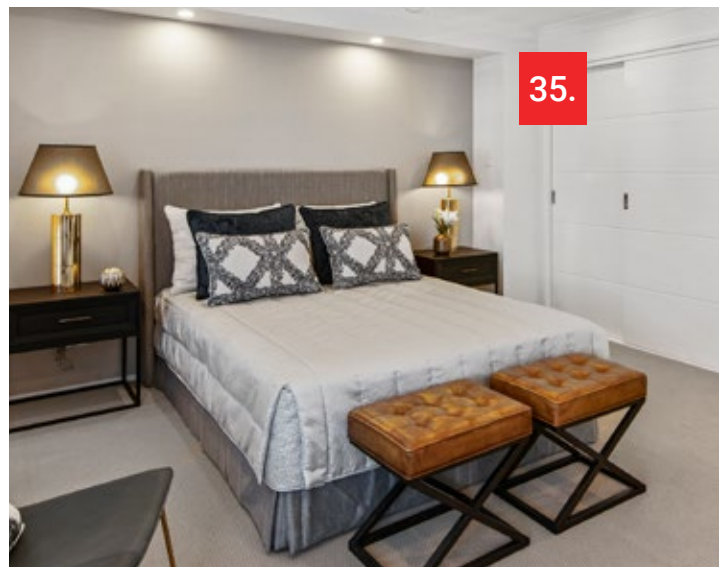
# Modern feels



20. ALDER 'TAYA' CHROME ACCESSORIES - TOWEL RAILS / TOILET ROLL HOLDERS / SOAP HOLDERS (Chrome or Black finish).  
 21. CAROMA® 'URBANE II' 1600 FREESTANDING BATH. 22. FRAMELESS SHOWER SCREEN TO SHOWERS IN BATHROOM AND ENSUITE. 23. 'FLOATING' MIRROR. 24. CLIPSAL DUCTED EXHAUST FANS 25. INCREASE WALL TILING TO CEILING HEIGHT IN BATHROOM AND ENSUITE (single storey designs only). 26. INCREASE WALL TILING TO CEILING HEIGHT IN BATHROOM AND ENSUITE (double storey designs only).

\*\* Items shown in Bathroom / Ensuite options section do not include additional wet areas such as Powder Rooms or Guest Ensuites. Additional costings will incur if available for your design. Speak to our New Home Consultant for more information.

# Easy living



27. 15 x FIXED LED DOWNLIGHTS (White). 28. GAINSBOROUGH 'LIANNA' DOOR HANDLES (Chrome or Black finish). 29. HUME LINEAR 'LIN 1' DOOR WITH TRANSLUCENT GLAZING TO WALK-IN PANTRY AND MEDIA (x2). 30. 92mm x 18mm SINGLE BEVEL SKIRTINGS. 31. INCREASE INTERNAL DOOR HEIGHT AND OPENINGS TO 2.34m. 32. CSR GYPROCK 'ALTO' CORNICE. 33. HUME 'HAMPTON' HAM1 DOORS (INFILL PANEL) THROUGHOUT (excluding walk-in pantry and media). 34. 4 x CEILING FAN/LIGHTS (White or Black finish). 35. SLIDING DOORS TO ROBES IN 3 x BEDROOMS (excluding walk-in robes).



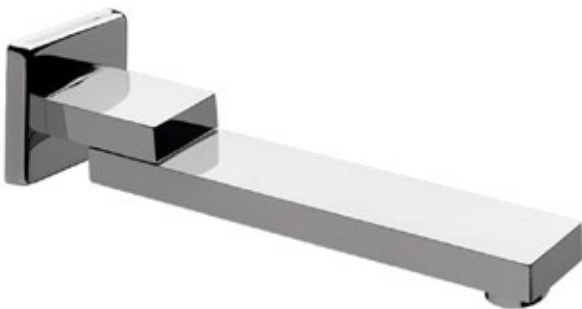
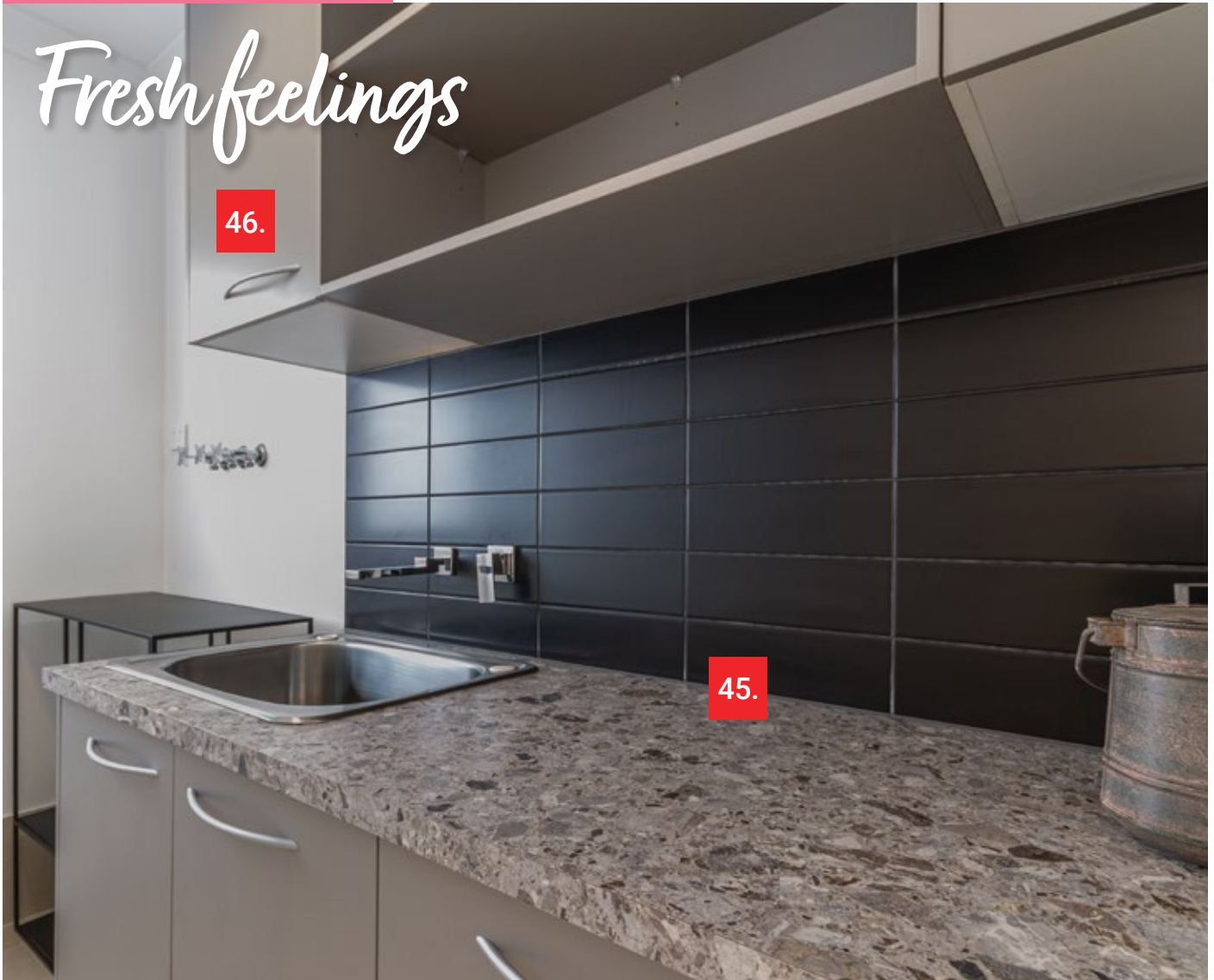
## Great outdoors



**36. TILED FINISH TO ALFRESCO FLOOR WHERE SHOWN ON DESIGN** (up to 500mm x 500mm tiles and excludes any additional extensions). **37. EXTERNAL GAS POINT TO ALFRESCO.** **38. EXTERNAL CAPPED OFF HOT/COLD WATER POINT WITH DRAINAGE TO ALFRESCO.** **39. BRADFORD 'THERMOSEAL' EXTERNAL WALL WRAP** (single storey designs only). **40. BRADFORD 'THERMOSEAL' EXTERNAL WALL WRAP** (double storey designs only). **41. BRICK UPGRADE** (Ask our New Home Consultants for the current upgrades available). **42. SOLAR PHOTOVOLTAIC (PV) 6.65kW SYSTEM (14 PANELS) WITH GOODWE 5kW EH PLUS SERIES SINGLE-PHASE HYBRID INVERTER** (excludes battery) **43. SOLAR PHOTOVOLTAIC (PV) 6.65kW SYSTEM (14 PANELS) WITH GOODWE 5kW EH PLUS SERIES SINGLE-PHASE HYBRID INVERTER UNLOCKED TO ENABLE A BATTERY CONNECTION** (excludes battery) **44. SOLAR PHOTOVOLTAIC (PV) 6.65kW SYSTEM (14 PANELS) WITH GOODWE 5kW EH PLUS SERIES SINGLE-PHASE HYBRID INVERTER UNLOCKED TO ENABLE A BATTERY CONNECTION INCLUDING GOODWE LYNX FG2 9.6kW BATTERY.**



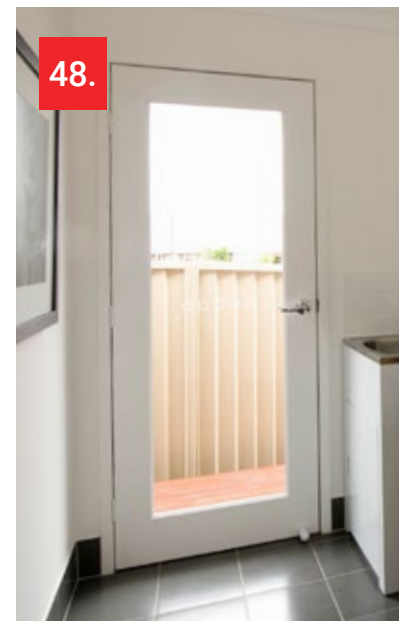
# Fresh feelings



47.



47.



48.

45. 1500mm UNDERBENCH CABINET (LAMINATE FINISH) WITH CLARK 45 LITRE DROP IN TUB AND 300mm HIGH SPLASHBACK TILING TO THE LENGTH OF THE CABINET. 46. 1500mm OVER-HEAD CUPBOARD (WITH OPEN-SHELF) AND INCREASE SPLASHBACK TILING TO UNDERSIDE OF THE OVER-HEAD CABINET. 47. ALDER 'EEVA' SWIVEL 220mm TAP WITH MIXER TAP - 'QAAD' OR 'TAYA' ('Qaad' in Chrome finish only. 'Taya' in Chrome or Black finish). 48. JST1 EXTERNAL HUNG DOOR TO LAUNDRY. 49. RECESSED CONCRETE SLAB TO WET AREA FLOOR (ground floor only).



*Perhaps consider*



A.



C.



**A. INCREASE CEILING HEIGHTS TO GROUND FLOOR** (standard height 2.4m). **B. INCREASE CEILING HEIGHTS TO FIRST FLOOR OF DOUBLE STOREY DESIGN** (standard height 2.4m). **C. INCREASE WALL TILING HEIGHT IN BATHROOM AND ENSUITE ONLY**. **D. INCREASE WALL TILING HEIGHT IN BATHROOM AND ENSUITE ONLY TO DOUBLE STOREY DESIGNS**



Kitchen, Bathroom, Ensuite ...

*Different layouts*  
**FOR MANY STYLES**

**CHAT WITH US TO FIND OUT MORE**

KITCHEN OPTIONS	ADVANTAGE	ASPIRE	ADDITIONAL OPTIONS
\$15,000 to spend on kitchen, bathroom and Aspire options	●		
Omega 900mm gas cooktop	●		
Omega 900mm oven	●		
Omega 900mm ducted rangehood	●		
Omega dishwasher	●		
Omega microwave oven	●		
Alder 'Qaad' or 'Taya' sink mixer tap in Chrome or Black finish	●		
Increase splashback tiles to underside of bulkhead	●		
Bulkheads to overhead kitchen cabinets	●		
Overhead cabinet and blade wall to fridge space	●		
Polytec 'Evolution' doors (choose from 'Ravine' or 'Legato' ranges)		●	
Polytec 'Thermolaminated' shaker style doors		●	
Pot drawers (x2 banks) to cabinetry		●	
Soft close doors and drawers to cabinetry		●	
Fisher & Paykel 900mm 5 burner freestanding cooker in Stainless Steel or Black finish		●	
Fisher & Paykel ducted rangehood in Stainless Steel or Black finish		●	
Fisher & Paykel microwave oven in Stainless Steel or Black finish		●	
Fisher & Paykel dishwasher in Stainless Steel or Black finish		●	

### EXTERNAL OPTIONS

Choice of Monier Horizon roof tile or Colorbond® Steel roof	●		
Roof ventilators with eave vents (x2)	●		
Solar photovoltaic (PV) 3.3kW system (7 panels) with 5kW single-phase inverter (excludes battery)	●		
Treated pine frames and trusses	●		
Sarking to roof	●		
Flyscreens (fibre mesh) to external windows	●		
Automatic garage door with 2 x remotes	●		
Screed concrete floor to Alfresco	●		
Rheem® 'Metro Max' 26 Litre continuous flow hot water system	●		
Tiled finish to Alfresco where shown on design (up to 500mm x 500mm tiles)		●	
External gas point to Alfresco		●	
External capped off hot/cold water point to Alfresco		●	
Brick upgrade - Ask our consultants for the current upgrades available		●	
Bradford 'Thermoseal' external wall wrap (single storey design only)		●	
Bradford 'Thermoseal' external wall wrap (double storey design only)		●	
Solar photovoltaic (PV) 6.65kW system (14 panels) with Goodwe 5kW single-phase hybrid inverter (excludes battery)		●	
Solar photovoltaic (PV) 6.65kW system (14 panels) with Goodwe 5kW single-phase hybrid inverter unlocked to enable battery connection (excludes battery)		●	
Solar photovoltaic (PV) 6.65kW system (14 panels) with Goodwe 5kW single-phase hybrid inverter unlocked to enable battery connection and Goodwe 9.6kW battery		●	

### LAUNDRY OPTIONS

1500mm underbench cabinet (Laminate finish) with Clark 45 Litre drop-in tub and 300mm high splashback tiling to the length of the cabinet		●	
1500mm over-head cupboard (with open-shelf) and increase splashback tiling to the underside of the over-head cupboard		●	
Alder 'EEVA' swivel 220mm tap with 'Qaad' mixer tap		●	

## LAUNDRY OPTIONS CONTINUED

	ADVANTAGE	ASPIRE	ADDITIONAL OPTIONS
JST1 external hung door to laundry		●	
Recessed concrete slab to wet area floor (ground floor only)		●	

## BATHROOM / ENSUITE OPTIONS\*\*

Wall mounted 'Floating' vanities		●	
Soft close doors and drawers to vanities		●	
Polytec 'Evolution' doors (choose from 'Ravine' or 'Legato' ranges)		●	
Polytec 'Thermolaminated' shaker style doors to bathroom and ensuite vanities		●	
Tiled recess (400mm x 400mm / 600mm x 400mm) <b>OR</b> Tiled ledge to showers		●	
Tiled recess (800mm x 400mm) to bath		●	
Recessed concrete slab to wet area floors (ground floor only)		●	
Alder 'Lynx' Eco Dual shower rail with 300mm round head to showers		●	
Alder mixer tapware to basins, bath and showers		●	
Caroma® 'Luna' square cleanflush wall faced toilets with soft close lids		●	
Alder 'Taya' accessories (towel rails, toilet roll holders & soap holders)		●	
Caroma® 'Aura' 1600 freestanding bath		●	
Frameless shower screens to showers in bathroom and ensuite only		●	
'Floating' mirror		●	
Clipsal ducted exhaust fans		●	
Apply selected Aspire options to guest ensuite (where shown on design)		●	
Apply selected Aspire options to powder room (where shown on design)		●	
Increase wall tiling to ceiling height in bathroom and ensuite only			●
Apply selected wall tiling to ceiling height to guest ensuite (where shown on design)			●
Apply selected wall tiling to ceiling height to powder room (where shown on design)			●

\*\* Items shown in Bathroom/Ensuite Options section above do not include additional wet areas such as Powder Rooms or Guest ensuites. Additional costings will incur if available for your design.

## LIVING OPTIONS

Carpet and tiles throughout home (excludes alfresco)	●		
Dulux 3 coat wash and wear 'Love your walls' paint system	●		
Bticino essential door entry video kit (315512)	●		
Bosch alarm system	●		
Gainsborough trilock entry set	●		
Double GPO (general power outlet) throughout home	●		
66mm x 18mm single bevel skirtings and architraves	●		
Melamine shelving to all robes, walk-in pantry, linen and broom	●		
15 x LED fixed downlights (white)		●	
Gainsborough 'Lianna' door furniture		●	
Hume 'Linear' LIN1 door with translucent glazing to walk-in pantry and media (x2)		●	
92mm x 18mm single bevel skirtings		●	
Increase internal door heights and openings to 2.34m		●	
CSR Gyprock 'Alto' cornice		●	
Hume 'Hampton' HAM1 doors throughout (excluding walk-in pantry and media)		●	
4 x Ceiling fan/lights in Black or White finish		●	
Sliding doors to robes in x 3 bedrooms (excluding walk-in robes)		●	
Increase ceiling heights to ground floor to 2.59m or 2.7m			●
Increase ceiling heights to first floor of double storey design to 2.59m or 2.7m			●





*Because you're worth it!*



---

[allworthhomes.com.au](http://allworthhomes.com.au)

The content is correct at time of publishing (10.4.24) and supercedes any previous version published. Items shown in this brochure may get discontinued without notice, however items will be replaced with something of equal value. The content shown is the property of Allworth Constructions and may not be copied in whole or part without the express written permission of the company. All illustrations are indicative only and may not be included. Allworth Constructions do not include furniture & furnishings, decorator items, air conditioning, electrical appliances, land and landscaping. For more information contact your Allworth New Home Consultant. Specifications subject to change without notice.