

# Focus *Designs*

- DOUBLE STOREY -



# Direct your 'FOCUS' towards this double storey range

Our Focus range is a brand new double storey design created for 10m block widths. Whilst your block width may be somewhat of a restriction for you, our Focus design range certainly offers you maximum space that is well-suited for the narrow block-sizes.

This design range boast impressive sized bedrooms, large open-plan living spaces both to upstairs and downstairs, galley-style kitchen that spills out on to our ever-popular alfresco area with an optional upgrade to a grand-sized alfresco.

The Focus is on display at our newest location HomeWorld Box Hill and showcases the new 'Edge' façade. So much can be said about this new design, that in order to really appreciate this well-designed home an inspection is certainly a must.

There are many reasons to be impressed with the Focus, all the modern features that to suit the needs of ever-growing families, this range of designs offer you multiple living zones to help you entertain your guests, no matter how many you have to entertain.

We are proud to introduce our optional 'Aspire' package. Simply choose which optional inclusions you would like to add to your home. Take one, or take them all. This optional package has been created with you in mind, so you can build your home, your way to suit your lifestyle.

In choosing an Allworth Home you will have the benefit of 40 years master built experience. We have mastered the planning and building process, honed to a point, being recognised as one of the most efficient builders in New South Wales.

Whether your family is small or large, we understand that all customers are different and all have distinct lifestyle needs. With many home designs to choose from, you'll be sure to find what you are looking for at Allworth Homes.

Take a look through our brochure and talk to one of our friendly New Home Consultants about the Focus design range today.

**WHERE TO VIEW THE  
FOCUS ON DISPLAY**  
OPEN 7 DAYS  
FROM 10AM TO 5PM



## **HOMEWORLD BOX HILL**

20 Gizi Street  
Box Hill Park NSW 2765

P. 9627 2600

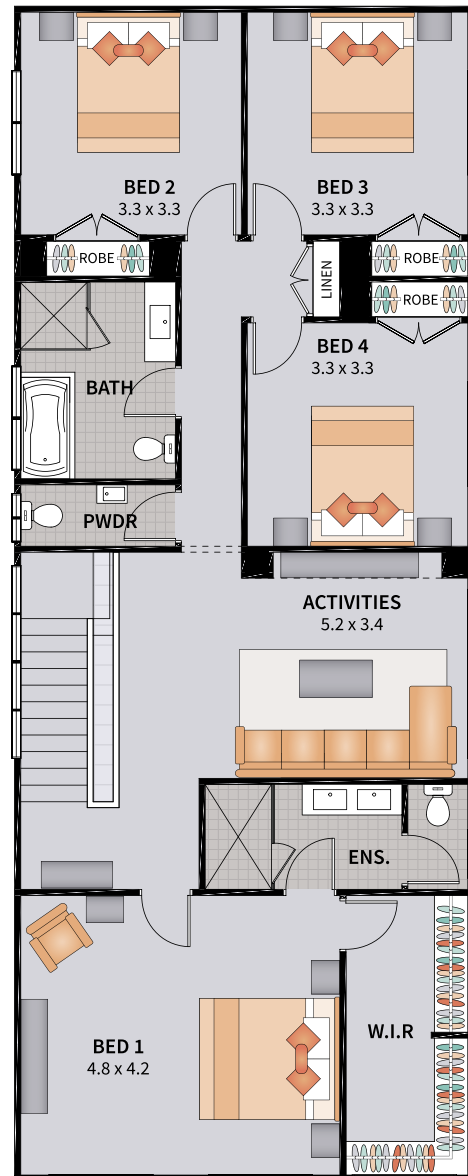
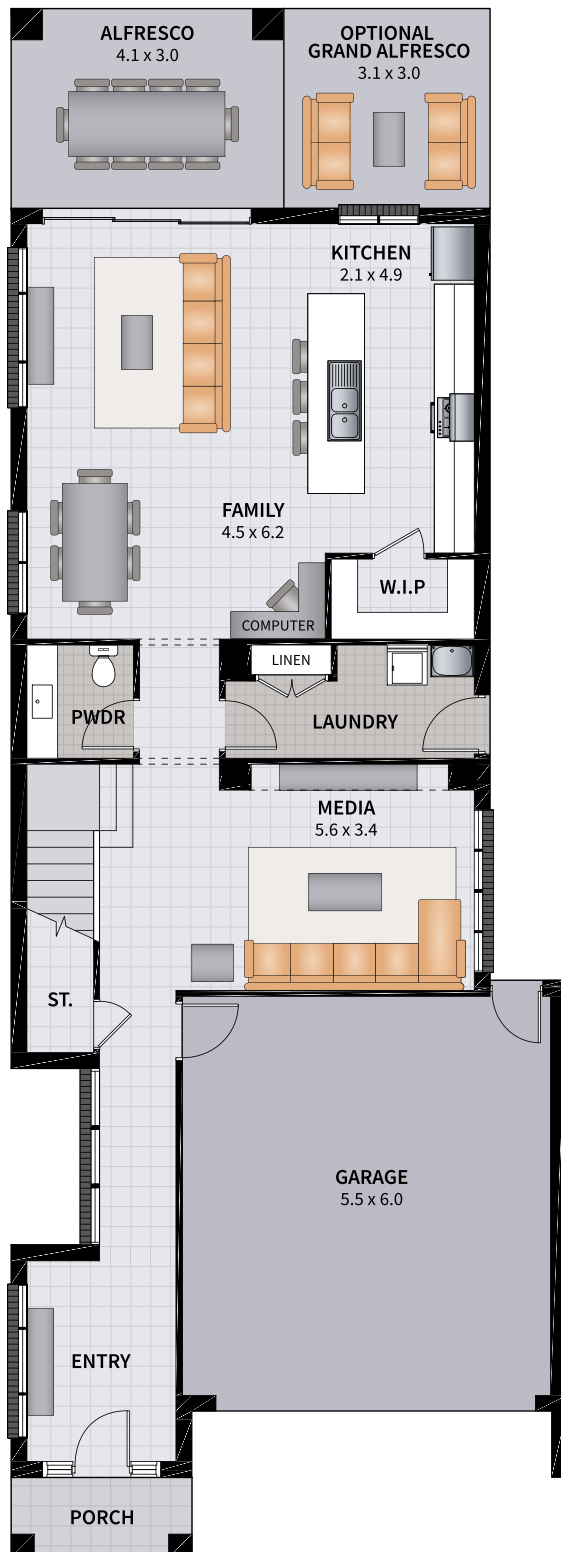
E. [boxhillsales@allworthhomes.com.au](mailto:boxhillsales@allworthhomes.com.au)

## FOCUS - DISPLAY

Focus Four 29 Zero on display at  
HomeWorld Box Hill



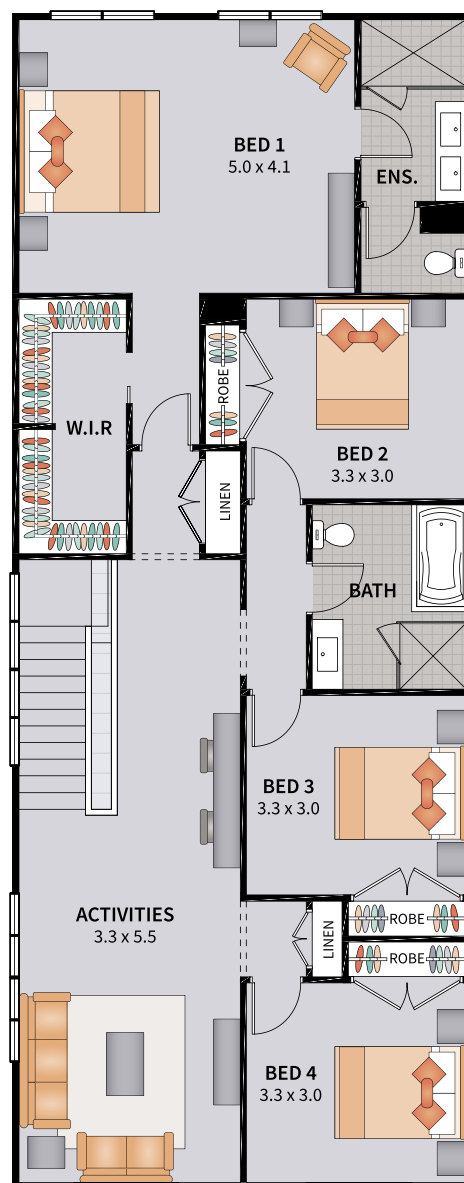
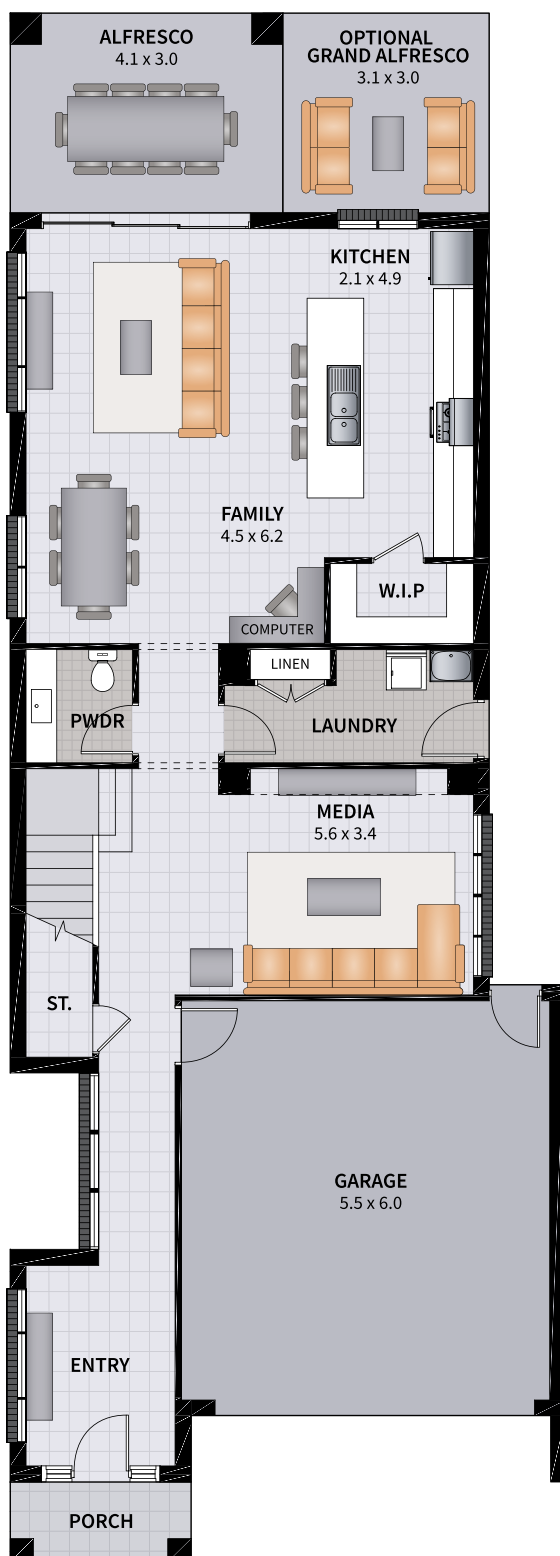
## 4 BEDROOM / MEDIA / ACTIVITIES



Width: 8.35m	Depth: 22.07m
Size: 29.60 sq.	Area: 275.03m <sup>2</sup>

# FOCUS FOUR 29.1 CONVERSE ZERO

4 BEDROOM / MEDIA / CONVERSE OPTION A



**SUITS 10m x OVER 30m ZERO LOTS**

Width: 8.35m

Depth: 22.07m

Size: 29.60 sq.

Area: 275.03m<sup>2</sup>

# FOCUS FOUR 29.2 CONVERSE ZERO

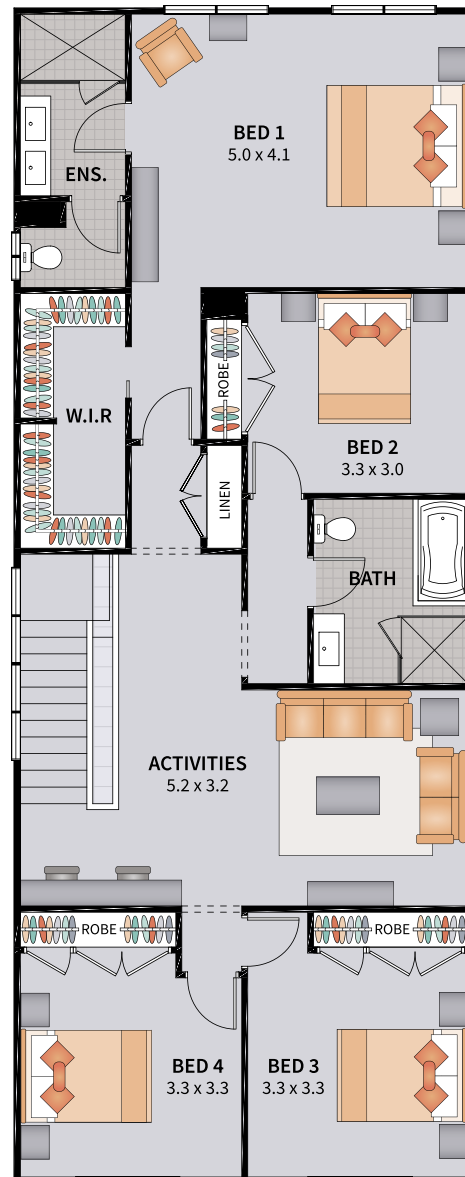
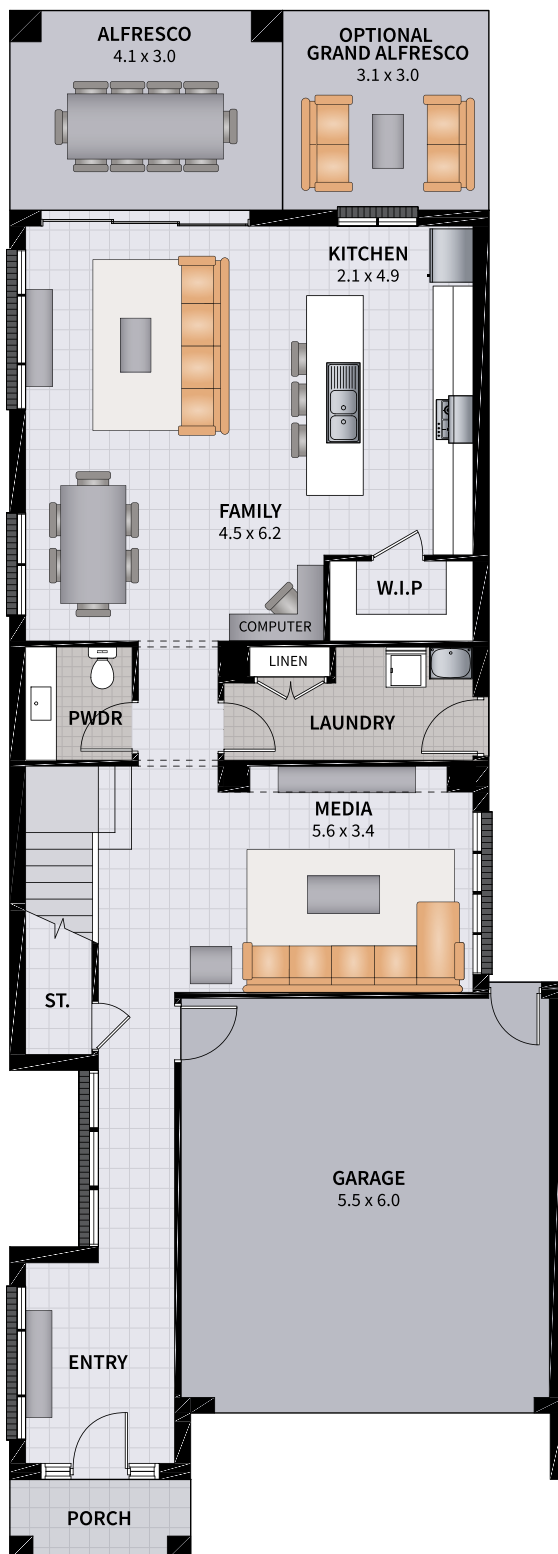
4 BEDROOM / MEDIA / CONVERSE OPTION B

  
4

  
3

  
2

  
2



SUITS 10m x OVER 30m ZERO LOTS

Width: 8.35m

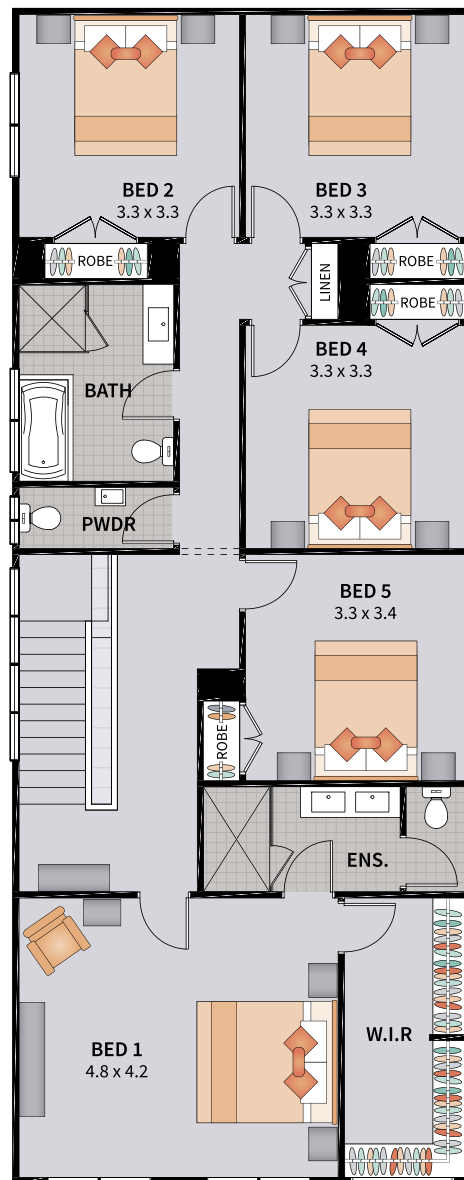
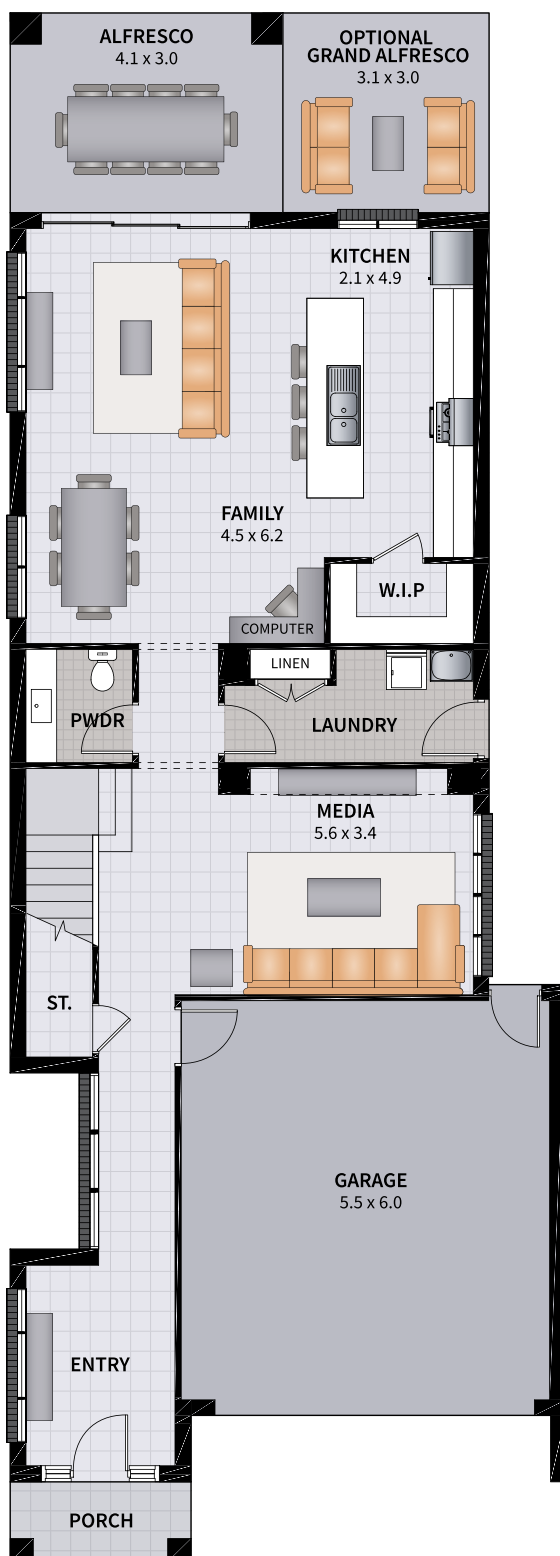
Depth: 22.07m

Size: 29.60 sq.

Area: 275.03m<sup>2</sup>

# FOCUS FIVE 29 ZERO

5 BEDROOM / MEDIA / ALFRESCO



SUITS 10m x OVER 30m ZERO LOTS

Width: 8.35m

Depth: 22.07m

Size: 29.60 sq.

Area: 275.03m<sup>2</sup>



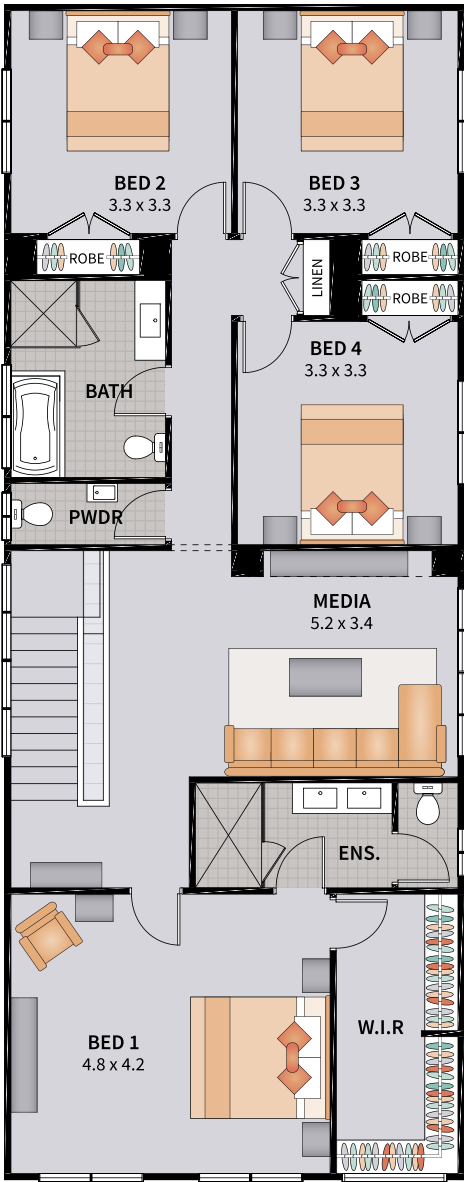
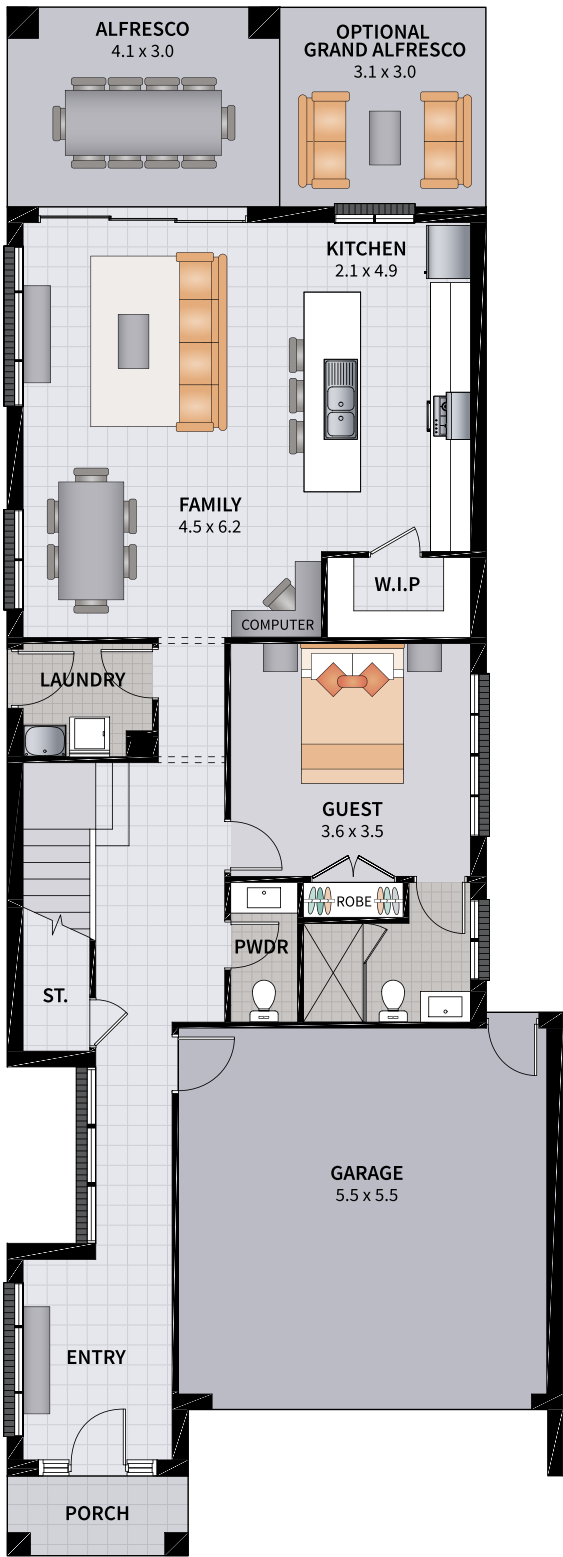
# FOCUS FIVE GUEST 29 ZERO

5 BEDROOM GUEST / MEDIA / ALFRESCO






5
4
2
2





SUITS 10m x OVER 30m ZERO LOTS

Width: 8.35m	Depth: 22.07m
Size: 29.54 sq.	Area: 274.45m <sup>2</sup>



DISPLAYED AT HOMEWORLD BOX HILL



EDGE



CAPE

DESIGN AND FAÇADE ON DISPLAY AT THAT LOCATION

FOCUS - FAÇADES



COASTAL



EXECUTIVE [NO BALCONY]





HAMPTONS



CLASSIC [NO BALCONY]



CLASSIC



URBAN





*Because you're worth it!*

[allworthhomes.com.au](http://allworthhomes.com.au)

**1300 769 988**

The content shown is the property of Allworth Constructions and may not be copied in whole or part without the express written permission of the company. Lot width and Lot depth sizes are to be used a guide only and is subject to Authority requirements, Developer guidelines and site conditions. Façades shown are for illustration purposes only and may alter structure and dimensions slightly depending on design. For more information contact your Allworth New Home Consultant. The content is correct at time of publishing (10.9.21) and supercedes any previous version published. AWH-DS-Brochure-Focus-10.9.21

**Allworth Constructions Pty Limited. ABN 78 002 565 353. BL34459.**