

# Capri *Designs*

- NARROW -



# Be impressed with the functionality of this range

The Capri range has everything the family needs to live in comfort and style while specifically suiting 10m ZERO lots. Armed with various designs that will work with DA/CC and CDC options. The Capri is an excellent solution for families who need to find the perfect home that suits their land.

The separate living spaces allow you to live harmoniously and will surely please many families. However, some designs still feature great storage options like a spacious walk-in pantry off the kitchen, linen cupboards off the laundry. In contrast, all designs feature robes to all bedrooms. The designs in the Capri range will illustrate to you both DA/CC and CDC options that are available to suit your specific needs on your lot.

Have you heard about our 'Aspire' options? Simply choose which options you would like to add to your home. Then, take one, or take them all. These options have been created with you in mind to build your home your way to suit your lifestyle.

You will benefit from 40 years of master built experience when choosing an Allworth Home. We have mastered the planning and building process, honed to a point, being recognised as one of the most efficient builders in New South Wales.

We understand that all customers are different and have distinct lifestyle needs. With many home designs to choose from, you'll be sure to find what you are looking for at Allworth Homes.

Take a look through our Capri brochure and talk to one of our friendly New Home Consultants.



**ADVANTAGE**

**Get the Allworth Advantage package for only \$2,900!**

*That's \$40,000 of value inclusions for your new home!*

[allworthhomes.com.au/advantage-package](http://allworthhomes.com.au/advantage-package)





TEMPO 24°



CLASSIC 24°



COASTAL 24°



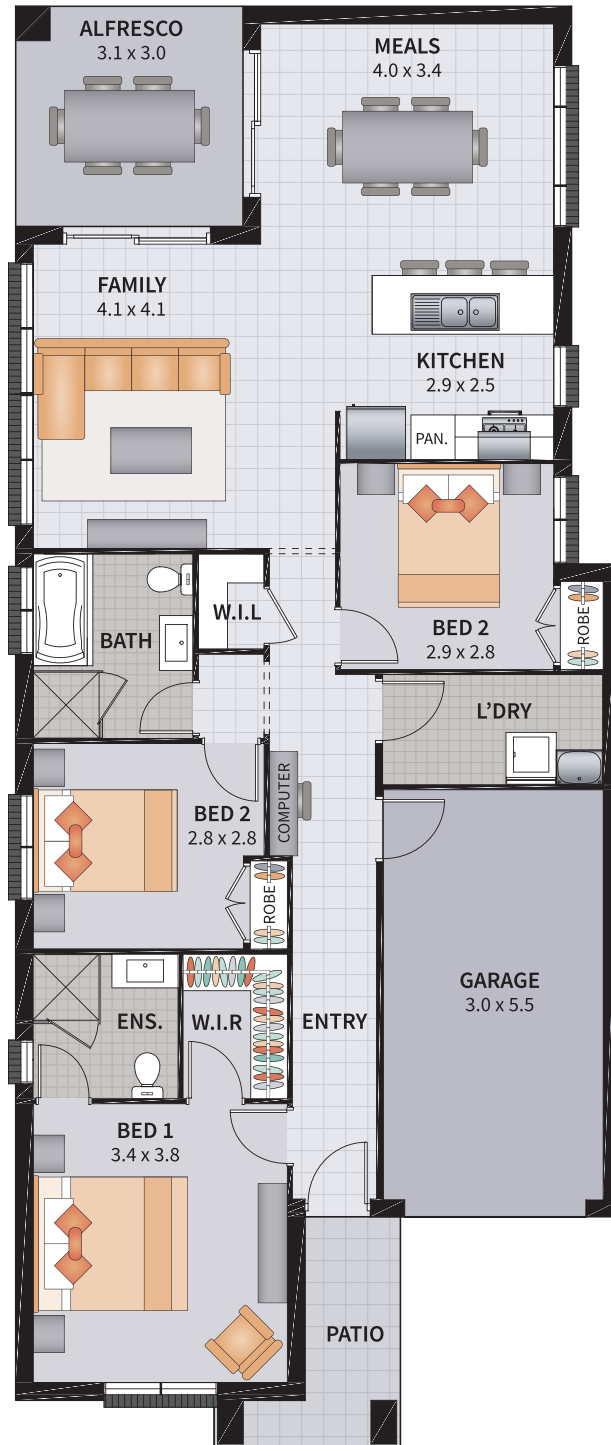
MARDI 24°




PORTICO 24°

# CAPRI THREE 15 ZERO [CDC]

ELARA / 3 BEDROOM / ALFRESCO

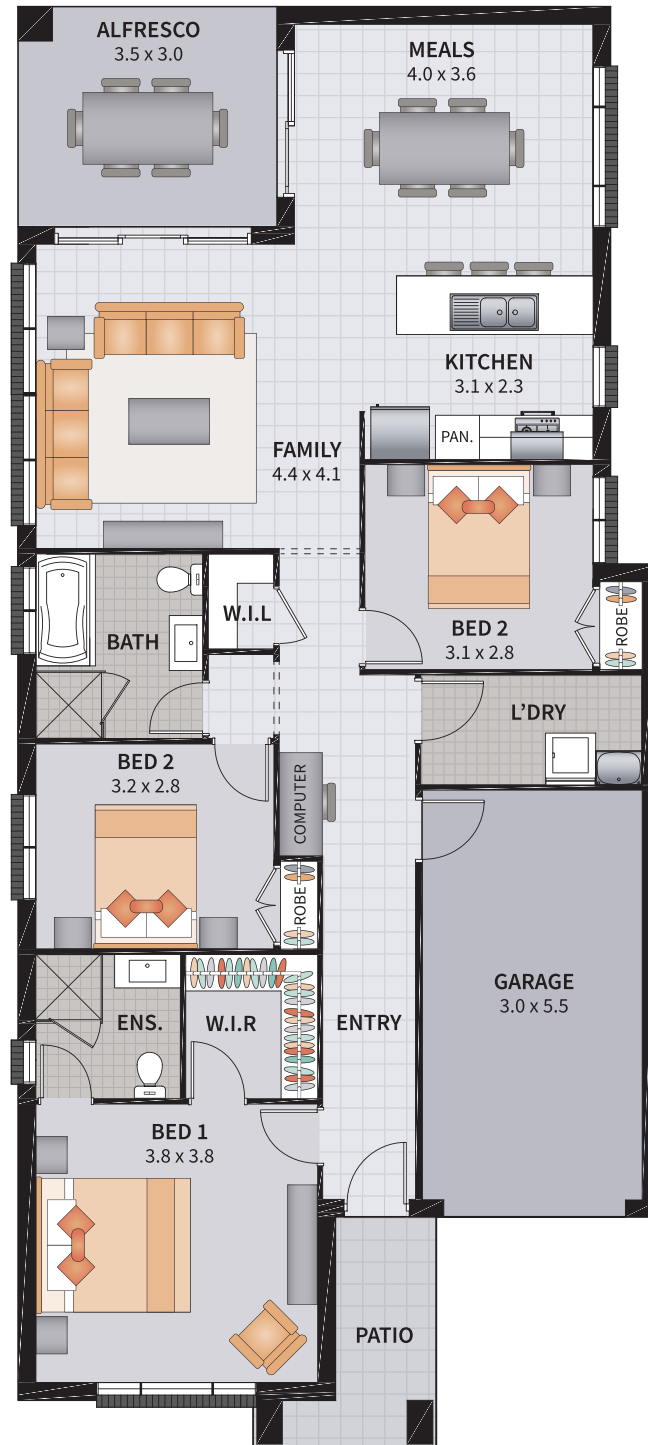


 SUITS 10m x 28m ZERO LOTS

Width: 8.25m	Depth: 19.65m
Size: 15.69 sq.	Area: 145.91m <sup>2</sup>

# CAPRI THREE 16 ZERO [DACC]

3 BEDROOM / ALFRESCO

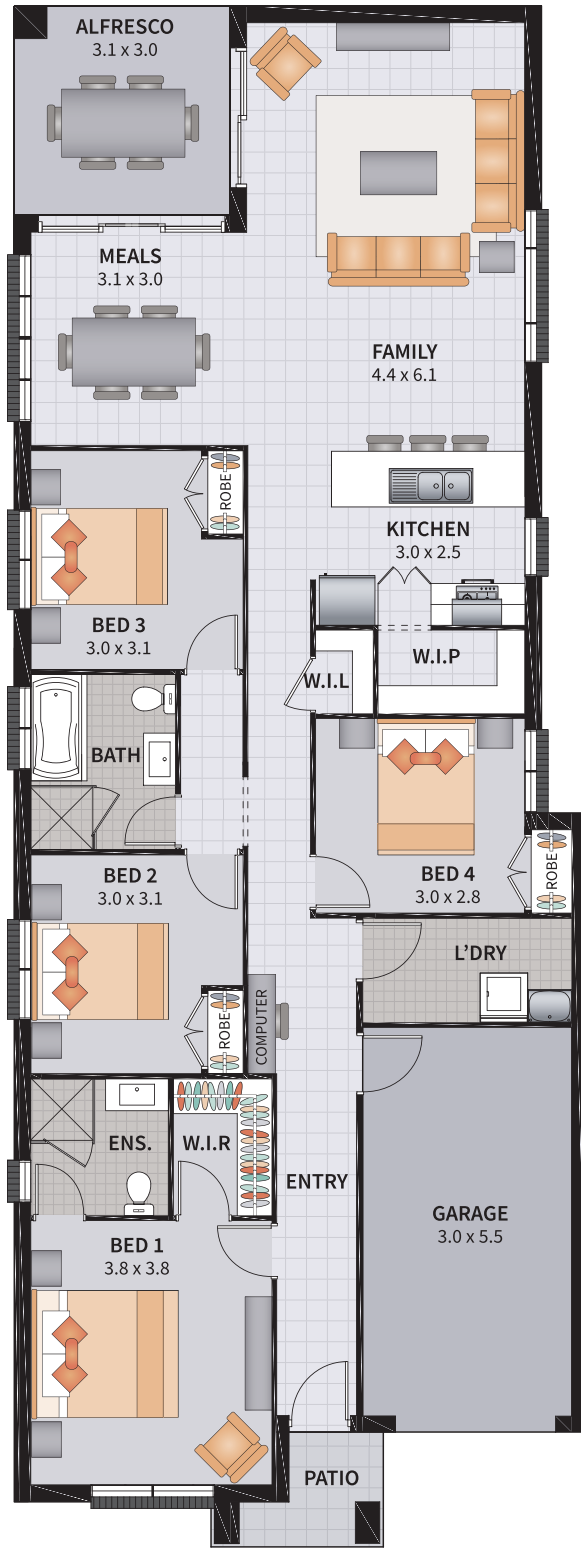


 SUITS 10m x 28m ZERO LOTS

Width: 8.75m	Depth: 19.65m
Size: 16.73 sq.	Area: 155.48m <sup>2</sup>

# CAPRI FOUR 18 ZERO [CDC]

ELARA / 4 BEDROOM / ALFRESCO

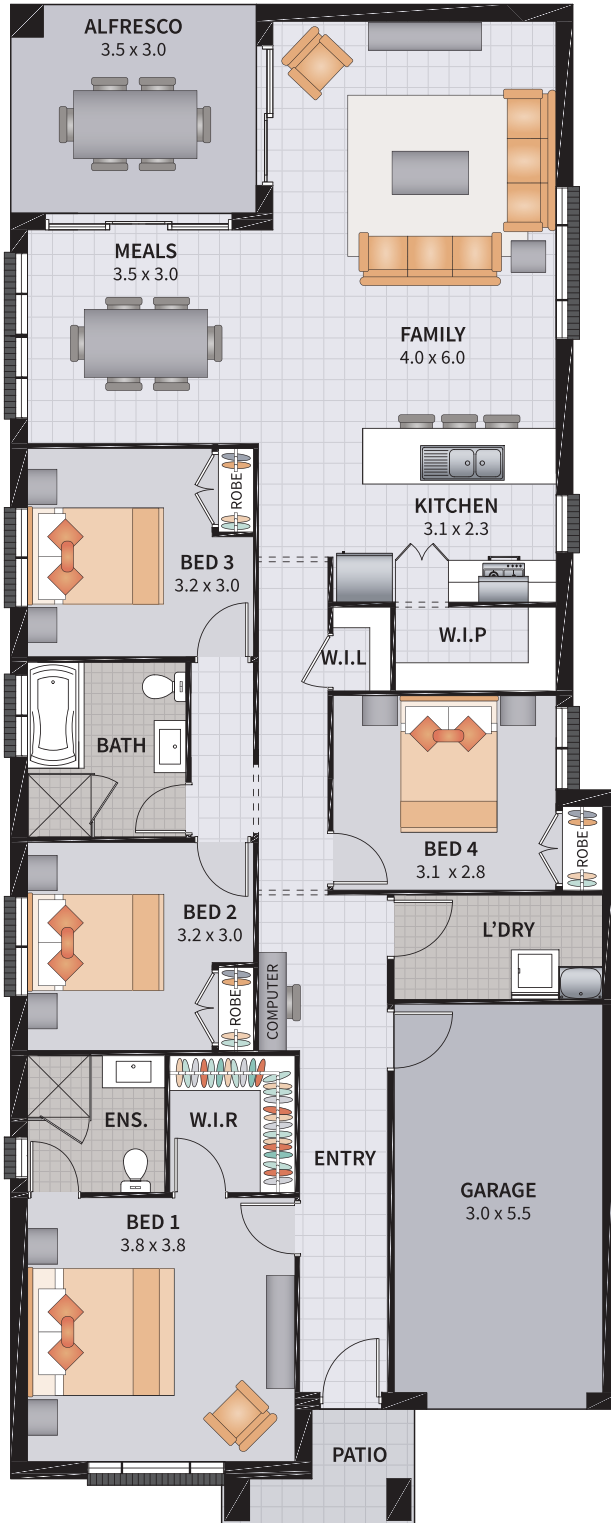



SUITS 10m x 30m ZERO LOTS

Width: 8.25m	Depth: 22.15m
Size: 18.11 sq.	Area: 167.95m <sup>2</sup>

# CAPRI FOUR 19 ZERO [DACC]

4 BEDROOM / ALFRESCO

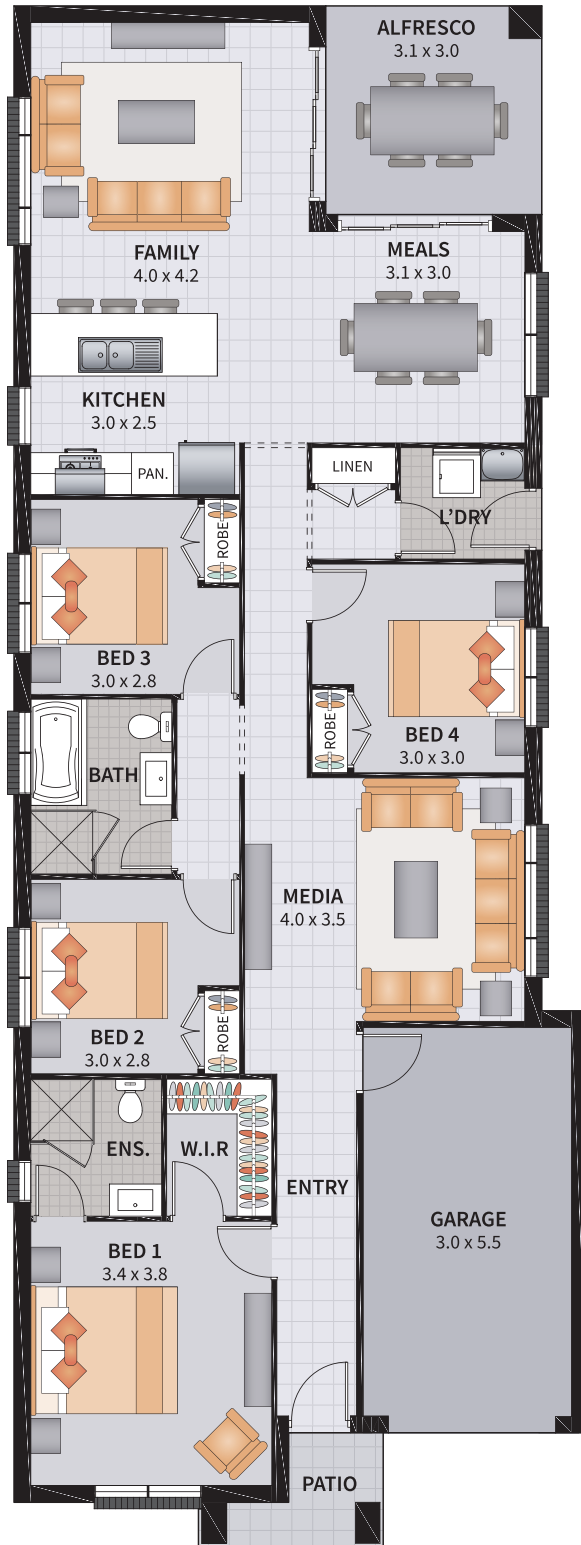


 SUITS 10m x 29.5m ZERO LOTS

Width: 8.75m	Depth: 21.84m
Size: 18.97 sq.	Area: 176.27m <sup>2</sup>

# CAPRI FOUR 17 ZERO [CDC]

ELARA / 4 BEDROOM / MEDIA / ALFRESCO



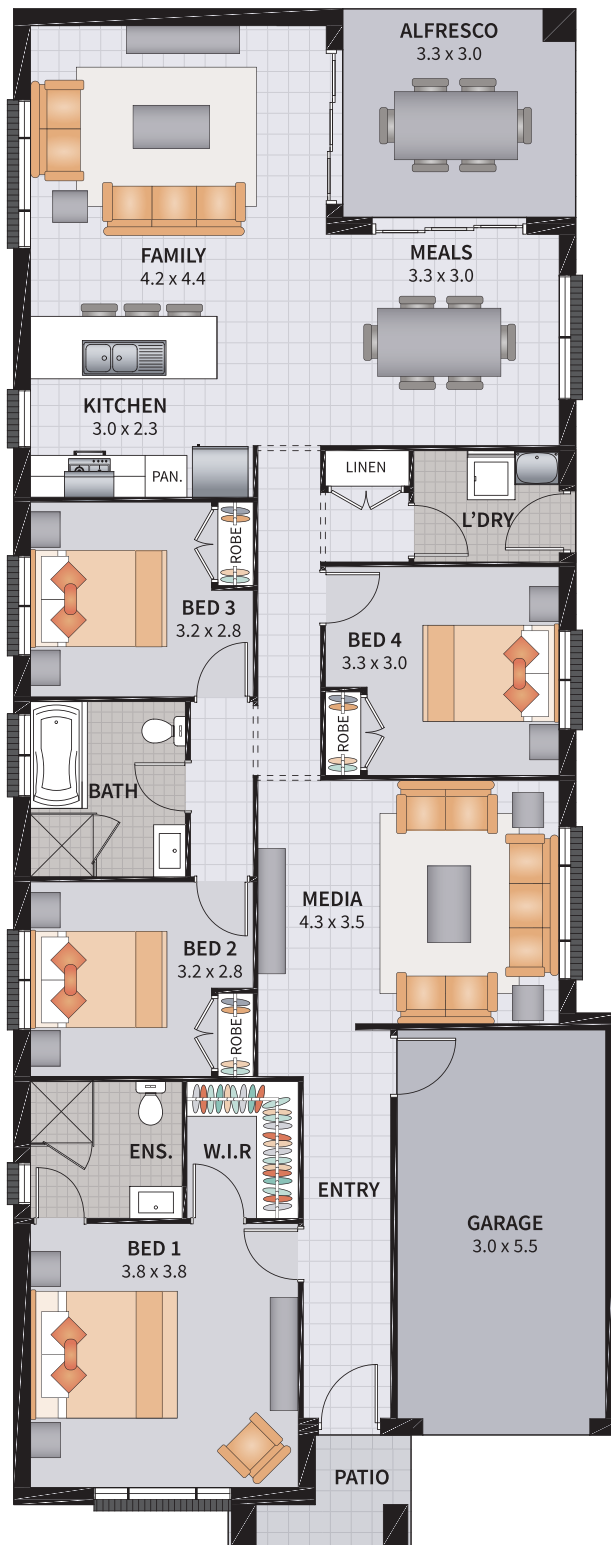
 SUITS 10m x 30m ZERO LOTS

Width: 8.25m	Depth: 22.15m
Size: 17.91 sq.	Area: 166.01m <sup>2</sup>



# CAPRI FOUR 19.1 ZERO [DACC]

4 BEDROOM / MEDIA / ALFRESCO

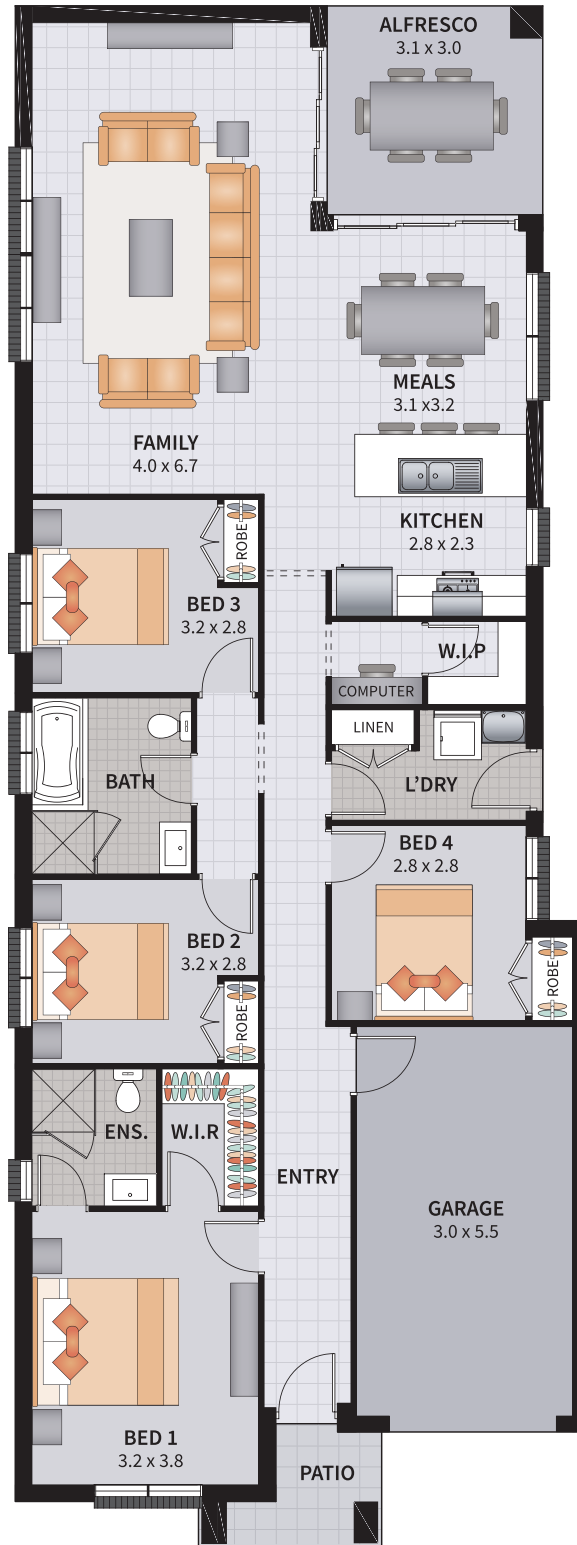


 SUITS 10m x 30m ZERO LOTS

Width: 8.75m	Depth: 22.15m
Size: 19.07 sq.	Area: 177.18m <sup>2</sup>

# CAPRI FOUR 18.1 ZERO [CDC]

ELARA 4 BEDROOM / GREAT ROOM / ALFRESCO

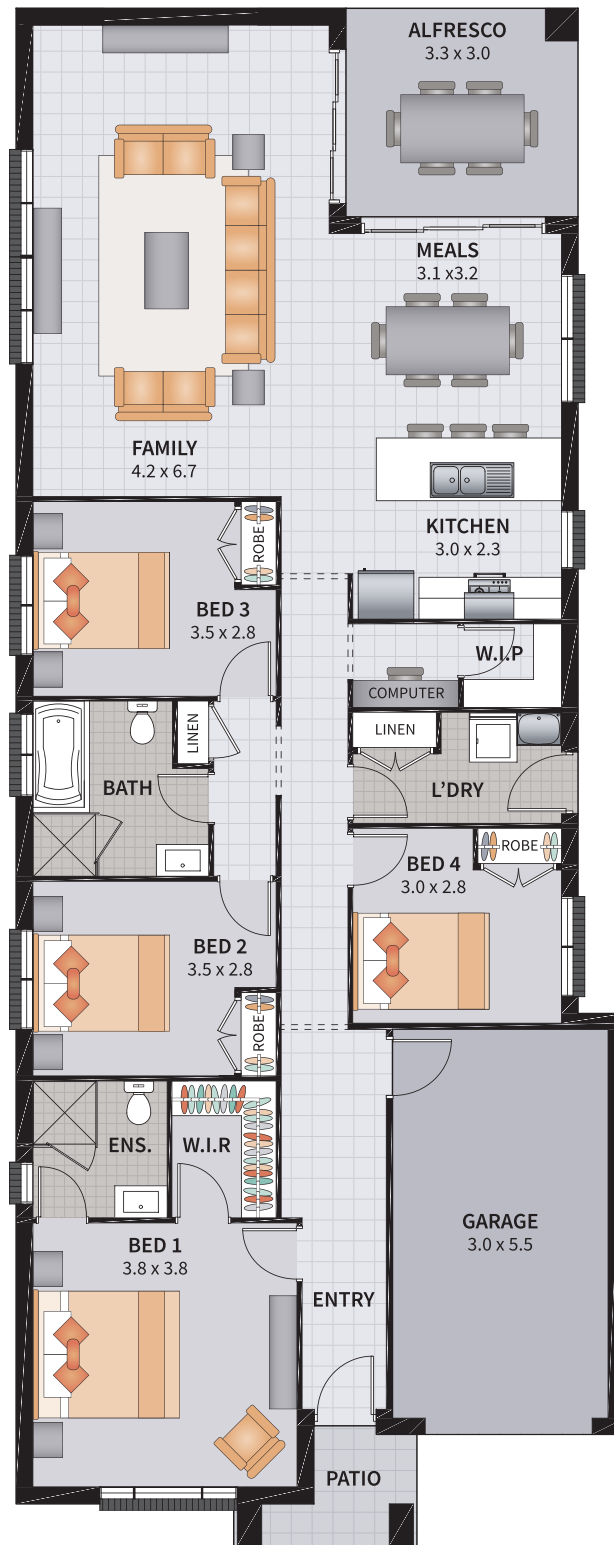


SUITS 10m x 30m ZERO LOTS

Width: 8.25m	Depth: 22.15m
Size: 18.00 sq.	Area: 167.21m <sup>2</sup>

# CAPRI FOUR 19.2 ZERO [DACC]

4 BEDROOM / GREAT ROOM / ALFRESCO



 SUITS 10m x 30m ZERO LOTS

Width: 8.75m	Depth: 22.15m
Size: 19.07 sq.	Area: 177.18m <sup>2</sup>



*Because you're worth it!*

[allworthhomes.com.au](http://allworthhomes.com.au)

---

**1300 769 988**

The content shown is the property of Allworth Constructions and may not be copied in whole or part without the express written permission of the company. Lot width and Lot depth sizes are to be used a guide only and is subject to Authority requirements, Developer guidelines and site conditions. Façades shown are for illustration purposes only and may alter structure and dimensions slightly depending on design. For more information contact your Allworth New Home Consultant. The content is correct at time of publishing (6.11.23) and supercedes any previous version published. AWH-NW-Brochure-Capri-6.11.23

**Allworth Constructions Pty Limited. ABN 78 002 565 353. BL34459.**